

Bishops' Conference of Scotland

Statistical Review of non-recent Cases of Abuse.

An analysis of Religious records from 1943 to 2005

February 2018

INTRODUCTION

Following the publication of the McLellan Report, Scotland's Catholic Bishops began a comprehensive review of Safeguarding procedures and protocols for use across the Catholic Church in Scotland.

In 2013, at the same time as establishing the McLellan Commission, the Bishops of Scotland also undertook to publish a statistical review of non-recent cases of abuse. The period of the review was set at 1943-2005. Each Bishop instructed his Diocesan and Safeguarding Offices to provide all the requisite information held by each Diocese for that period. Similarly, Religious Orders and Congregations active in Scotland during the period of the review were asked to submit all the relevant data they held. These statistics have been compiled and subjected to an independent statistical analysis. The results of this analysis are published below.

CONTEXT

It is hoped that the publication of this review demonstrates the Bishops' ongoing commitment to openness and transparency. It also provides an opportunity for the Church to repeat and renew apologies made to those who have suffered any form of abuse, at any time, by anyone representing the Church.

The report comprises an analysis of existing or surviving evidence and documentation only. Any record held by the Church (or by Religious Orders and Congregations) which contained an allegation or accusation of any kind was recorded for the purposes of this study.

It needs to be acknowledged that the Report cannot be considered an infallible assessment of abuse allegations over the period concerned. Incidents may have taken place which were not reported or recorded or where records have not been retained. As a result, the report is illustrative rather than definitive. Within the limitations of these qualifications, the report is however a complete record of all cases known to the Catholic Church in Scotland during the years 1943-2005 and to Religious Orders and Congregations active in Scotland during that time period.

The retrospective compilation of records is a challenging process particularly when the timescales concerned extend back over seven decades. Several studies and reviews have noted the challenges encountered when carrying out such work. The systematic review of Historical Abuse carried out by Tom Shaw for the Scottish Government in 2007¹ noted: "Looking back over a long period of time poses difficulties." That review described the process of locating historical records as "an enormous and daunting task." Similarly, the University of Central Lancaster Review of *The Abuse of Children in Care Scotland*,² commissioned by the Scottish Child Abuse Inquiry, covering the period 1930-2014, stated that: "a lack of records and documentation makes it difficult to gain a picture of abuse in the past."

SUMMARY

The study of records revealed that 379 cases or reports of abuse were made between 1943 and 2005. Of these, 263 concerned institutions run by religious sisters; 47 cases concerned religious brothers; 9 related to priests of religious orders; 1 to a church volunteer; 1 to a permanent deacon; 59 related to diocesan clergy; and the remaining 5 complaints did not conclusively identify an alleged perpetrator.

Allegations of abuse were categorised using the following code: 1 = Sexual; 2 = Physical; 3 = Verbal; 4 = Emotional; 5 = Neglect; 0 = Other. Of the 379 cases, 108 (28%) involved sexual or sexual with other categories; 273 (72%) involved physical or physical with other categories; 1 involved verbal abuse; and 5 related to emotional abuse.

Summing up these categories indicates: there were 108 cases where the abuse was sexual and/or sexual with other types of abuse; there were 273 cases where the abuse was physical and/or physical with other types of abuse; there was 1 case of verbal abuse; and 5 cases of emotional abuse.

The 59 cases which related to diocesan clergy took place during the period 1943 – 2005. Over this time, some 2064³ diocesan clergy served in Scottish parishes.

¹ <http://www.gov.scot/resource/doc/203922/0054353.pdf>

² <https://www.childabuseinquiry.scot/media/1211/prevalence-of-abuse-in-scotland-professor-lorraine-radford.pdf>

³ 1943 count (906) plus total ordinations over 1944-2005 (1158): 906+1158 = 2064

BIOGRAPHY

Statistical analysis was carried out by Dr Ben Torsney, B.Sc., M.Sc., Ph.D.

Honorary Research Fellow (Statistics), School of Mathematics & Statistics, University of Glasgow.

Fellow of the Royal Statistical Society

**SAFEGUARDING HISTORICAL REVIEW: 1943-2005
PRELIMINARY INFORMATION on RESPONSES**

Dr Ben Torsney

First some comments on responses

There are 379 allegations. Two main features are:

- a) A large majority specify not one year, but an interval of years, in respect of their allegation; so a 'FirstYear' and a 'LastYear'. Only 30 specify a single year. This yields interval or censored data.
- b) A large majority specify more than one type of allegation.

Further points are:

- 1) 257 cite one group from a specific locality.
- 2) 27 have at least one of 'FirstYear' or 'LastYear' missing.
- 3) Some specify a 'LastYear' which is before before 1943.
- 4) Some specify, a 'FirstYear' before 1943, but a 'LastYear' of 1943 or after.
- 5) The largest value of the difference ('LastYear' - 'FirstYear') is 31 years

There now follows 4 sections.

(A) Some summary BACKGROUND data

1. Some summary information over the Years 1943-2005

Row	Variable	Count	Missing	Minimum	Mean	Maximum
1	PriestsSeculars	63	1	647	864	1034
2	PriestsRegulars	63	1	25	217	288
3	Total Priests	63	1	791	1081	1309
4	Parishes	63	3	115	423	506
5	Baptisms	63	1	7510	16784	26015
6	Marriages	63	1	2045	5657	8107
7	Catholic Population	63	1	621398	765179	828300
8	Senior Seminarians	63	5	24	126	248
9	ReligHousesMen	63	1	0	51	61
10	ReligHousesWomen	63	1	0	127	171

2. Some summary information over the Years 1975-2005

Row	Variable	Count	Missing	Minimum	Mean	Maximum
1	Brothers	29	0	61	100	156
2	Sisters	29	0	573	951	1302

3. Calculated number of diocesan priests: 1943-2005:

1943 count (906) plus total ordinations over 1944-2005 (1158)

Calculated number: 906+1158 = 2064

(B) Some summary BACKGROUND data of HISTORICAL REVIEW RESPONSES

Tally for Diocese/ReligCongregation

i)Diocese/ReligCon	Count
Archdiocese of Glasgow	16
Archdiocese of St Andrews & Edinburgh	20
Christian Brothers	13
Congregation of the Holy Spirit (Spiritans)	2
Congregation of the Passion	3
Diocese of Aberdeen	0
Diocese of Argyll & The Isles	4
Diocese of Dunkeld	2
Diocese of Galloway	5
Diocese of Motherwell	10
Diocese of Paisley	3
Marist Brothers FMS	34
Motherwell Daughters of Charity	257
Order of Preacher (Dominican Friars)	1
Sisters of Nazareth	6
Society of Jesus	3
N=	379

Tally for 1)AgainstWhom

Code

1	=	DiocesanPriest
1?	=	DiocesanPriest possibly
3,9	=	ChurchVolunteer or ReligiousSister
6	=	PermanentDeacon
7	=	ReligiousPriest
8	=	ReligiousBrother
9	=	ReligiousSister

1)AgainstWhom	Count
1	59
1?	5
3,9	1
6	1
7	9
8	47
9	257
N=	379

As mentioned above, many allegations cite a set of categories of abuse.

These are the frequency counts:

Code: 1 = Sexual, 2 = Physical, 3 = Verbal, 4 = Emotional, 5 = Neglect, 0 = Other.

Tally for Discrete Variables: 2) AllegationType

AllegationType	Count
0	14
1	86
1,2	7
1,2,0	1
1,2,3,4	2
1,2,4	9
1,2,4,5	2
1,4 2?	1
2	13
2,3,4	21
2,3,4,0	1
2,3,4,5	5
2,4	182
2,4,0	6
2,4,5	18
2,4,5,0	4
2,5	1
3	1
4	4
4,0	1
N=	379

(C) Investigations into Allegation Types by Accused Type

As noted above, many respondents cite a set of categories of abuse (Citing a set of categories is also a feature of responses to Q9b) 'Outcome'.) Note that it's possible that citing sets could in part be explained by several incidents of abuse over the period of years specified by a respondent. In contrast, only one respondent cites more than one category of type of abuser.

'Physical' and 'Sexual' occur most commonly and 'Emotional' mainly with one and/or other of these. Based on this feature, various groupings are explored below. Results comprise some two-way tables giving a breakdown of the number of allegations by 'set of type of allegation'/'alleged abuser'.

Sets of allegation types considered include: 'Physical at Least'; 'Sexual at least'; also 'Physical and/or Emotional at Least' and 'Sexual and/or Emotional at Least'.

The interpretation of the row labels is:

```
0 Other
1 DiocesanPriest
2 ChurchEmployee
3 ChurchVolunteer
4 Parishoner
5 Seminarian
6 PermanentDeacon
7 ReligiousPriest
8 ReligiousBrother
9 ReligiousSister
10 Religious
```

So in respect of the tables below:

```
1 = DiocesanPriest
1? = DiocesanPriest possibly
3,9 = ChurchVolunteer or ReligiousSister
6 = PermanentDeacon
7 = ReligiousPriest
8 = ReligiousBrother
9 = ReligiousSister
```

Rows: 1)AgainstWhom Columns: SexualOrNot

	NS	S&S+	All	(NS=NotSexual, S&S+=SexualOnlyOrIncludesSexual)
1	4	55	59	
1?	3	2	5	
3,9	1	0	1	
6	0	1	1	
7	0	9	9	
8	13	30	43	
9	244	11	255	
All	265	108	373	

Cell Contents: Count

So in the main, out of 108 allegations of sexual abuse at least, 55 against diocesan priests, 9 against religious priests, 30 against religious brothers, 11 against religious sisters.

Rows: 1)AgainstWhom Columns: Sex&EmotionalAllOrNot

	NSE	SE&SE+	All	(NSE=NotSexual/Emotional, SE&SE+=Sexual&OrEmotionalOnlyOr IncludesAtLeastOneOfThese,
1	4	55	59	
1?	1	4	5	
3,9	0	1	1	
6	0	1	1	
7	0	9	9	
8	13	30	43	
9	5	250	255	
All	23	350	373	

So, of 350 allegations of at least Sexual &/or Emotional abuse, 4 and possibly 3 more against priests, 30 against religious brothers and 250 were made against religious sisters.

Rows: 1)AgainstWhom Columns: PhysicalOrNot

	NP	P&P+	All	(NP=NotPhysical, P&P+=PhysicalOnlyOrIncludesPhysical)
1	54	4	58	
1?	2	3	5	
3,9	0	1	1	
6	1	0	1	
7	9	0	9	
8	28	15	43	
9	6	249	255	
All	100	272	372	

Cell Contents: Count

So, of 272 allegations of at least Physical abuse, 4 and possibly 3 more against priests, 15 against religious brothers and 249 were made against religious sisters.

Rows: 1)AgainstWhom Columns: Physical&EmotionalAllOrNot

	NPE	PE&PE+	All	(NPE=NotPhysical/Emotional, PE&PE+=Physical&OrEmotionalOnlyOr IncludesAtLeastOneOfThese,
1	54	4	58	
1?	2	3	5	
3,9	0	1	1	
6	1	0	1	
7	9	0	9	
8	28	15	43	
9	1	254	255	
All	95	277	372	

So, of 277 allegations of at least Physical &/or Emotional abuse, 4 and possibly 3 more against priests, 15 against religious brothers and 254 were made against religious sisters.

(D) Time Related Investigations – based on a Maximum Case Scenario

As one attempt to deal with the interval ('FirstYear','LastYear') feature of the data, we calculate the **maximum** possible number of the 379 respondents who could have been allegedly abused, **at least once**, in each of the years 1943 to 2005. These figures are listed in the table below. Note that they include those who specified a 'FirstYear' before 1943, but a 'LastYear' on or after 1943. They could be viewed as defining a 'maximum case scenario'. From them measures such as rates/percentages can be calculated. They are the inputs to, and define the term 'allegation' in, the plots which follow.

Notes:

1 A rationale for the term '**at least once**' in the first paragraph above is that one completed historical review form, in possibly a substantial number of cases, is unlikely to be an allegation of just one abuse incident, but rather of repeated incidents. So the counts for each of the years 1943 to 2005, in the table below, could conceivably be, in some cases, but maybe not all, a possible minimum for the number of alleged abuse incidents.

For example, in 1943 the count of 22 could point to at least 22 incidents in that year. This consideration should be kept in mind when considering all plots which follow, including those of percentages.

2 Interval or censored data, arises in other contexts, particularly medical ones; e.g. time to death (survival times) or time to recurrence of a disease is often right censored.

Note: There are
10 cases in which both YearFirst and YearLast are missing
14 cases with only YearLast missing

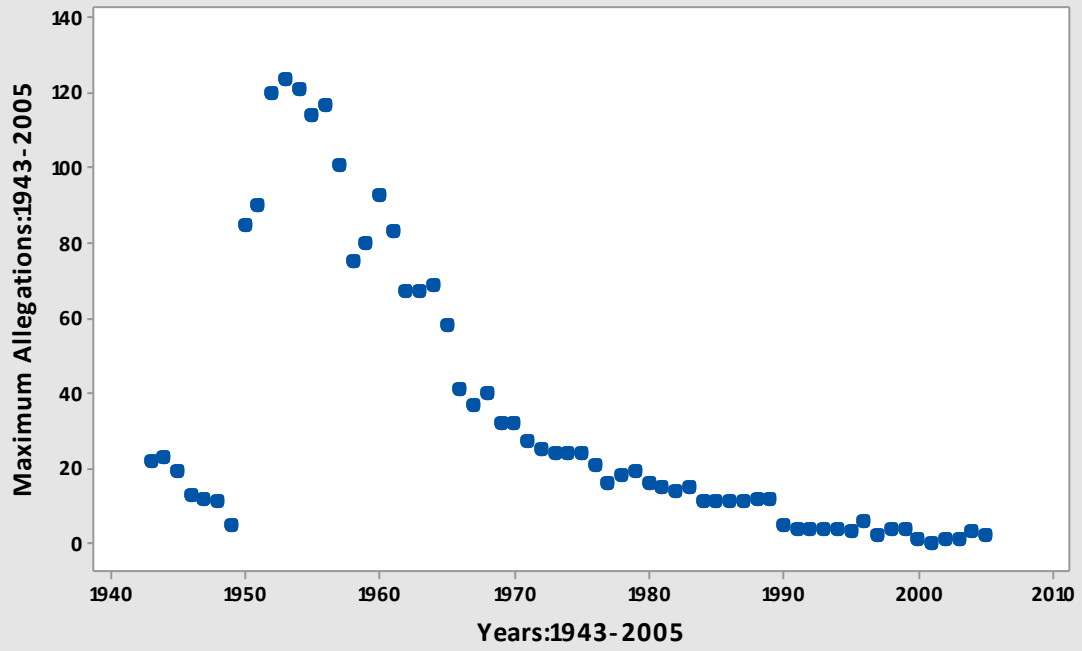
```
MTB > prin c440 c441
```

Data Display

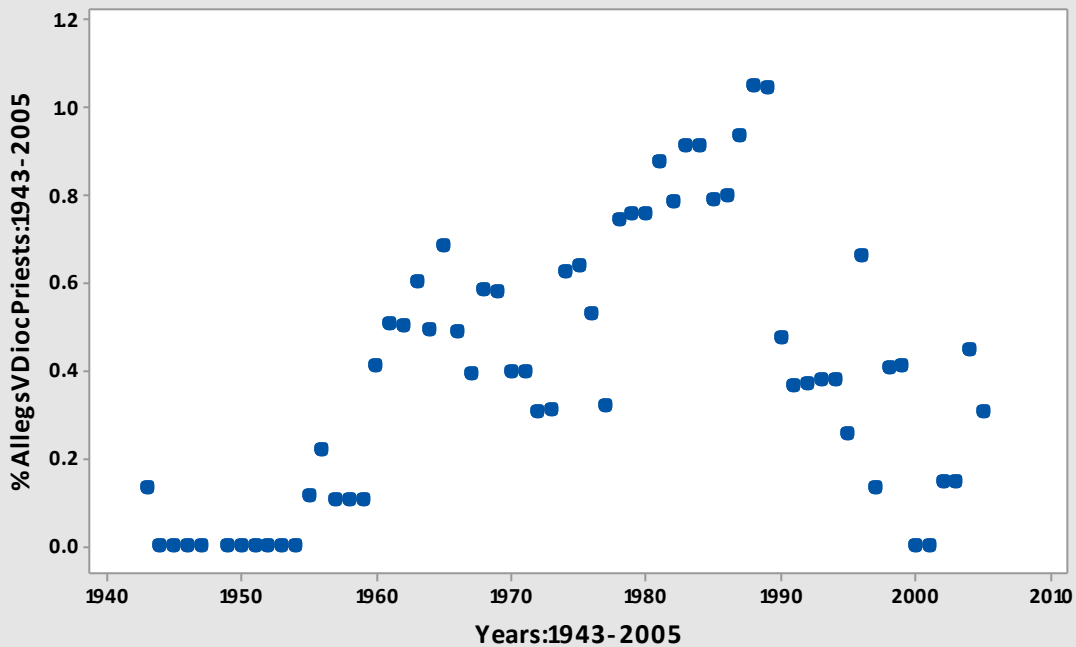
Row	Years	MaxAllegs1943-2005
18	1943	22
19	1944	23
20	1945	19
21	1946	13
22	1947	12
23	1948	11
24	1949	5
25	1950	85
26	1951	90
27	1952	120
28	1953	124
29	1954	121

30	1955	114
31	1956	117
32	1957	101
33	1958	75
34	1959	80
35	1960	93
36	1961	83
37	1962	67
38	1963	67
39	1964	69
40	1965	58
41	1966	41
42	1967	37
43	1968	40
44	1969	32
45	1970	32
46	1971	27
47	1972	25
48	1973	24
49	1974	24
50	1975	24
51	1976	21
52	1977	16
53	1978	18
54	1979	19
55	1980	16
56	1981	15
57	1982	14
58	1983	15
59	1984	11
60	1985	11
61	1986	11
62	1987	11
63	1988	12
64	1989	12
65	1990	5
66	1991	4
67	1992	4
68	1993	4
69	1994	4
70	1995	3
71	1996	6
72	1997	2
73	1998	4
74	1999	4
75	2000	1
76	2001	0
77	2002	1
78	2003	1
79	2004	3
80	2005	2

Scatterplot of Maximum Allegations:1943-2005



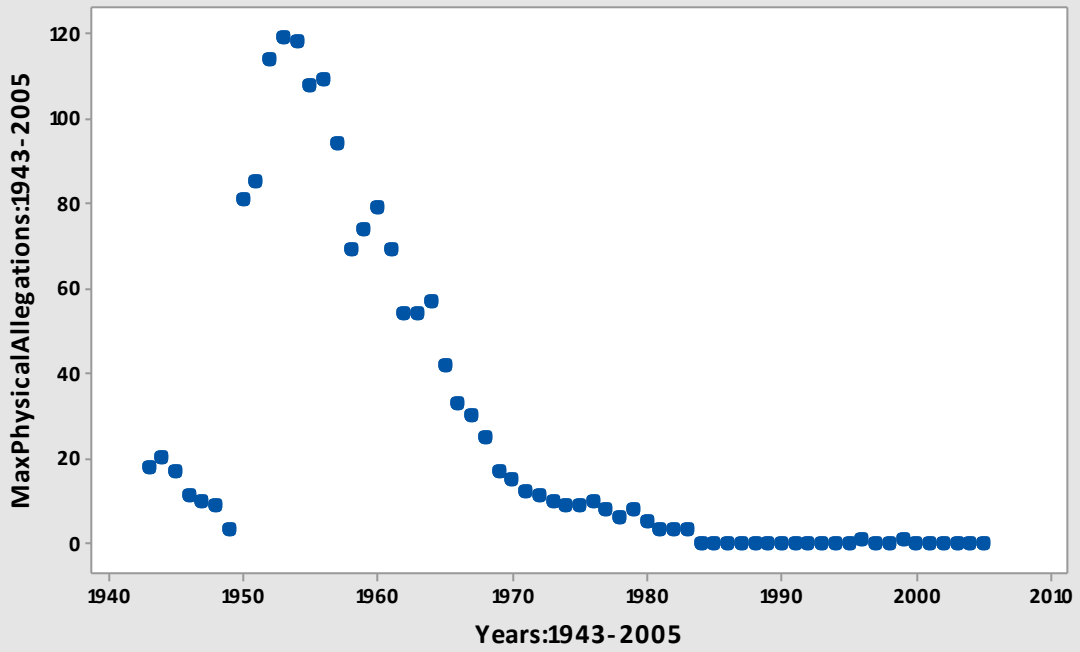
Scatterplot of %AllegsvDiocPriests Versus Years:1943-2005



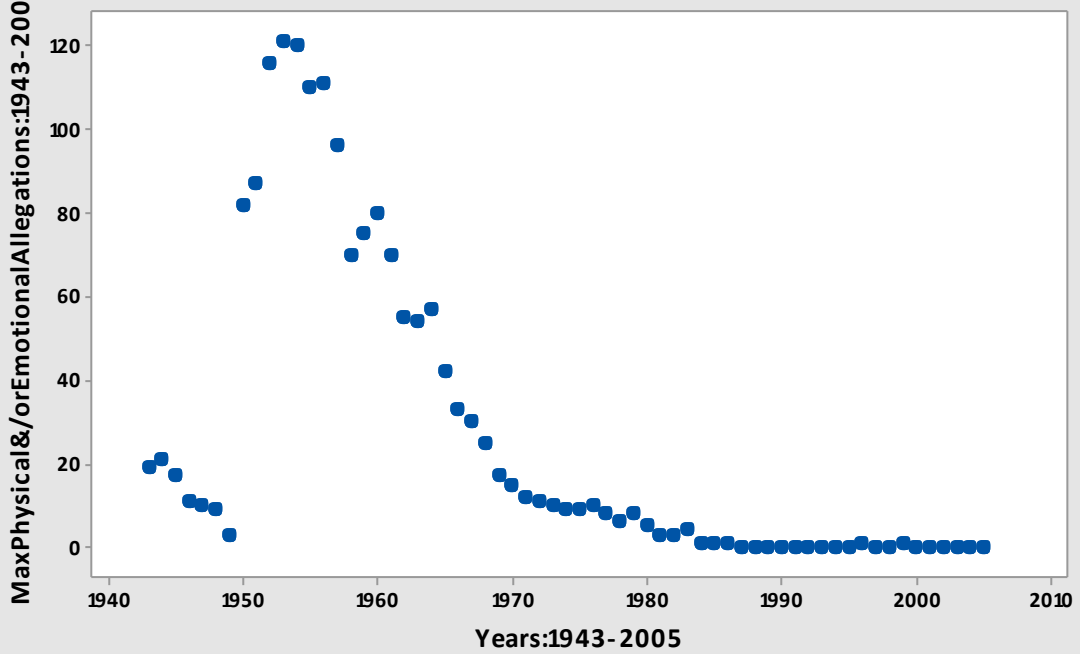
Scatterplot of %AllegVReligPriests Versus Years:1943-2005



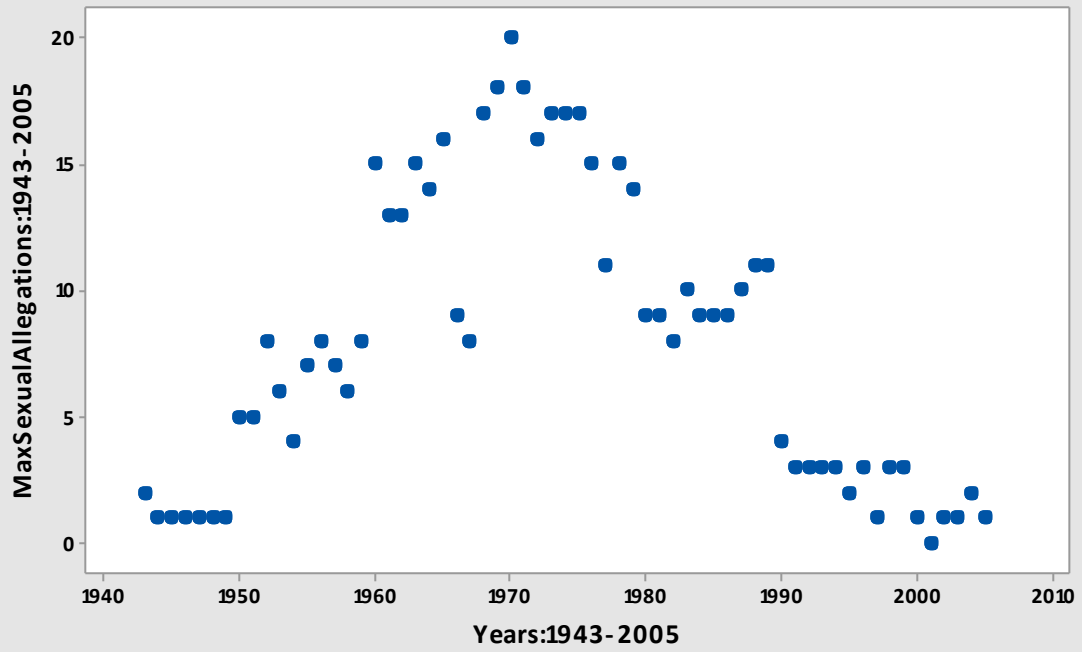
Scatterplot of Max Physical Allegations:1943-2005



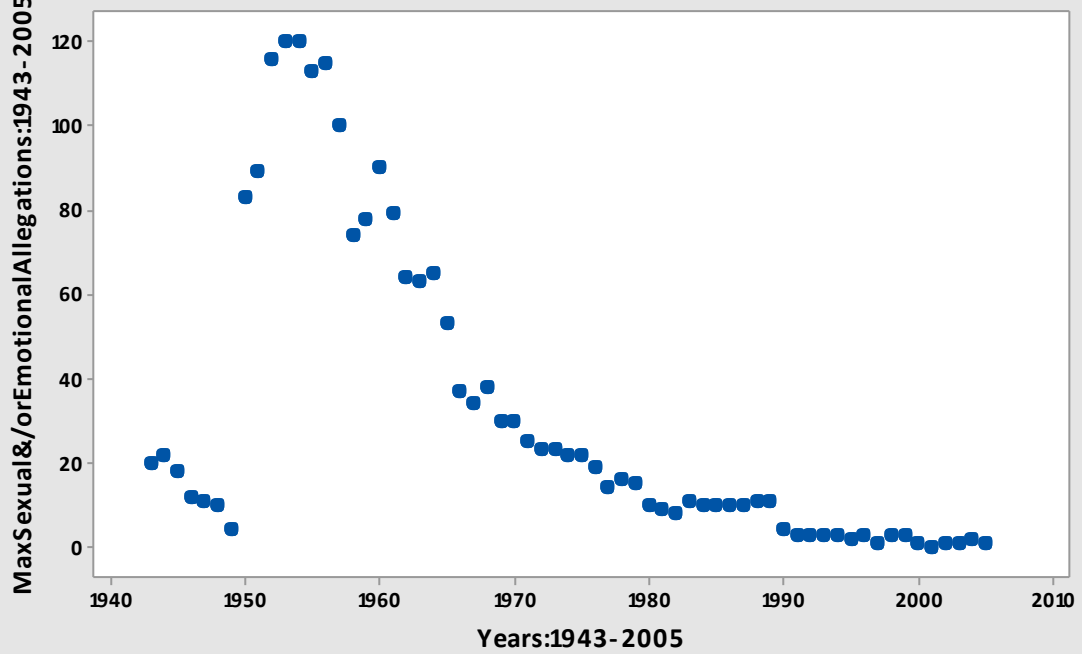
Scatterplot of Max Physical &/or Emotional Allegations:1943-2005



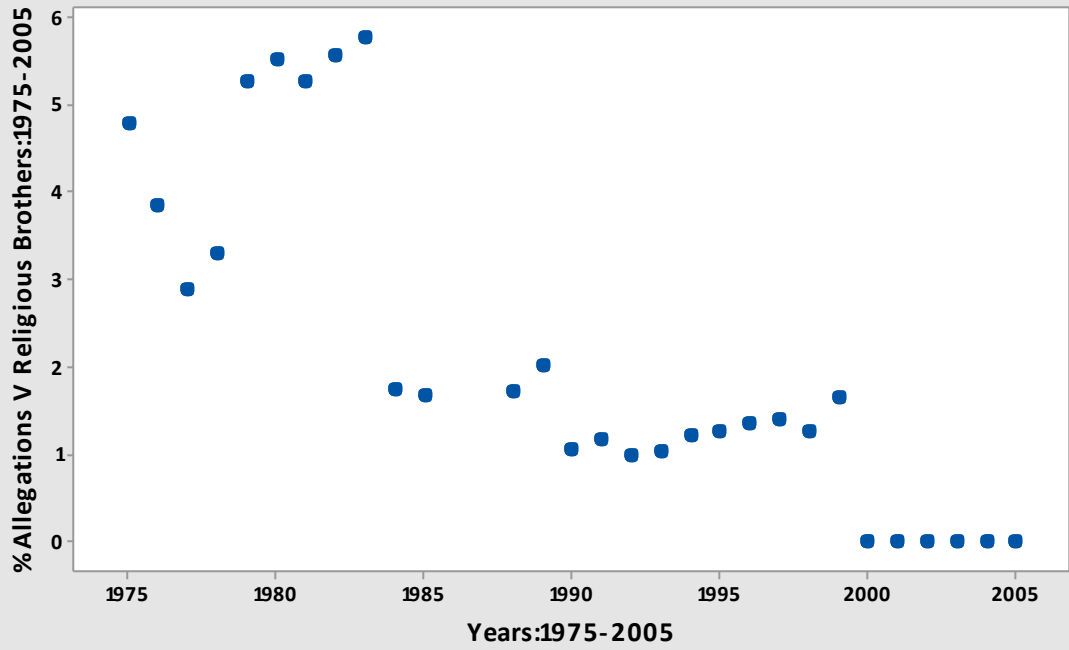
Scatterplot of Max Sexual Allegations:1943- 2005



Scatterplot of Max Sexual &/or Emotional Allegations:1943-2005



Scatterplot of %Allegations V Religious Brothers:1975-2005



Scatterplot of %Allegations V Religious Sisters:1975-2005

